

AIRPORT DIAGRAM

AL-78 (FAA)

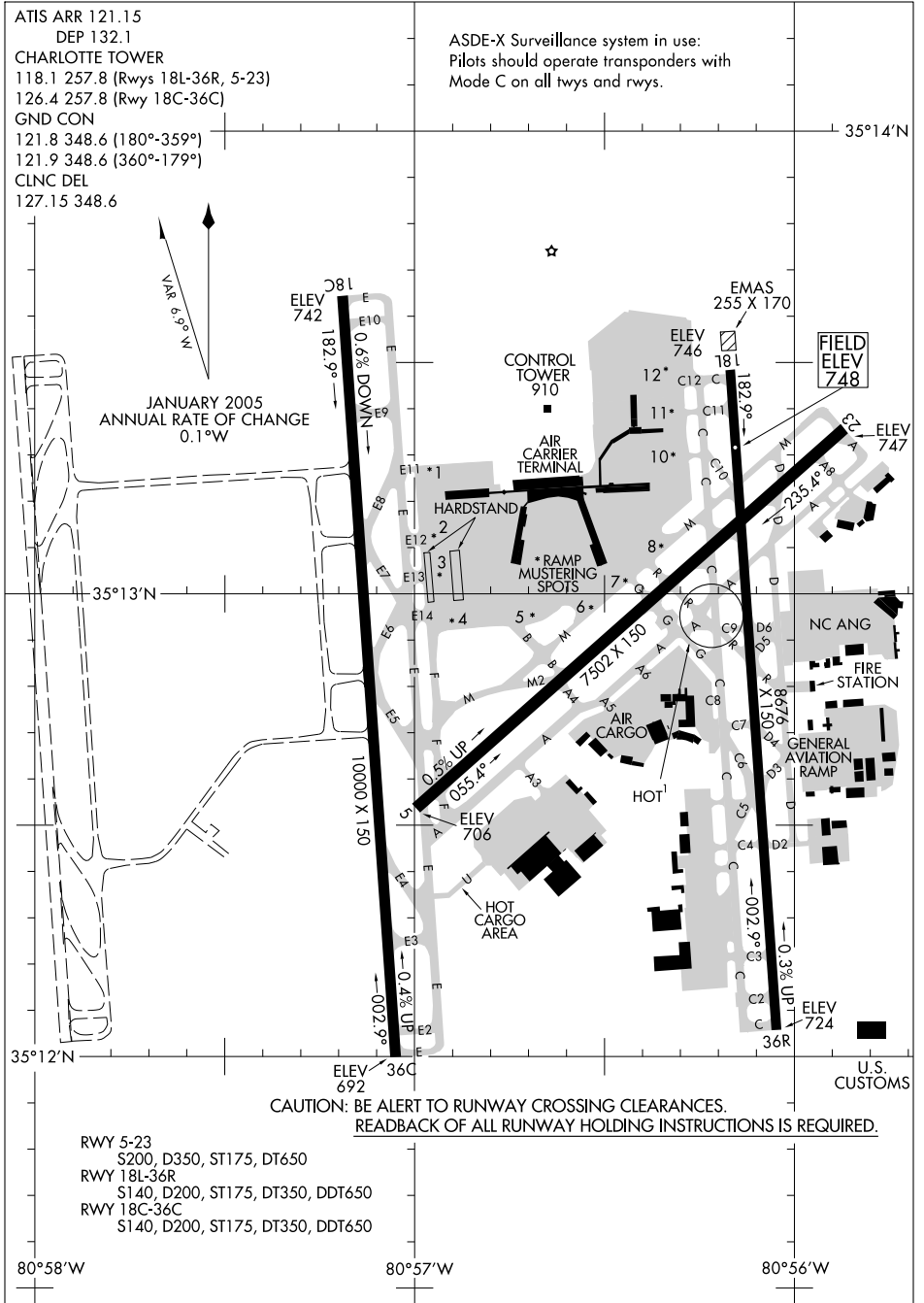
CHARLOTTE/DOUGLAS INTL (CLT)
CHARLOTTE, NORTH CAROLINA

ATIS ARR 121.15
 DEP 132.1
 CHARLOTTE TOWER
 118.1 257.8 (Rwys 18L-36R, 5-23)
 126.4 257.8 (Rwy 18C-36C)
 GND CON
 121.8 348.6 (180°-359°)
 121.9 348.6 (360°-179°)
 CLNC DEL
 127.15 348.6

ASDE-X Surveillance system in use:
 Pilots should operate transponders with
 Mode C on all twys and rwys.

SE-2, 07 MAY 2009 to 04 JUN 2009

SE-2, 07 MAY 2009 to 04 JUN 2009



RWY 5-23
 S200, D350, ST175, DT650
 RWY 18L-36R
 S140, D200, ST175, DT350, DDT650
 RWY 18C-36C
 S140, D200, ST175, DT350, DDT650

CAUTION: BE ALERT TO RUNWAY CROSSING CLEARANCES.
 READBACK OF ALL RUNWAY HOLDING INSTRUCTIONS IS REQUIRED.

80°58'W

80°57'W

80°56'W

AIRPORT DIAGRAM

CHARLOTTE, NORTH CAROLINA
CHARLOTTE/DOUGLAS INTL (CLT)